

## OEM References in Laser Welding and Brazing 2012 - 2018



### **Bergmann & Steffen GmbH**

Raiffeisenstraße 176

32139 Spenge

Telefon: +49 (5225) 8786-0

Fax: +49 (5225) 8786-27

E-Mail: [info@bergmann-steffen.de](mailto:info@bergmann-steffen.de)

[www.bergmann-steffen.de](http://www.bergmann-steffen.de)

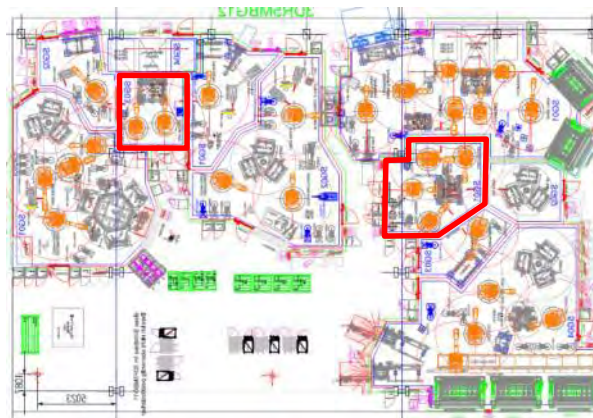
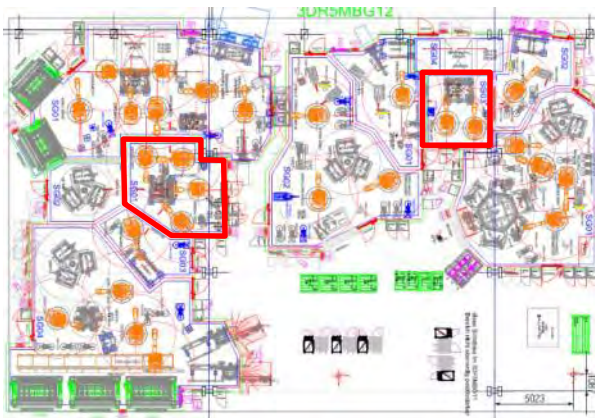
# BMW F56 / Swindon

- BMW F56 – mini 3dr – hood and front doors
- Realization phase 11/2012 – 02/2013
- 5 laser welding cells – 206m<sup>2</sup>
- 11 x tactile laser welding Scansonic ALO3
- 2 x remote laser welding with seam tracking Scanlab 30 FC-V + Lessmüller Weldeye remote
- 13 x Trumpf disc laser 4 kW



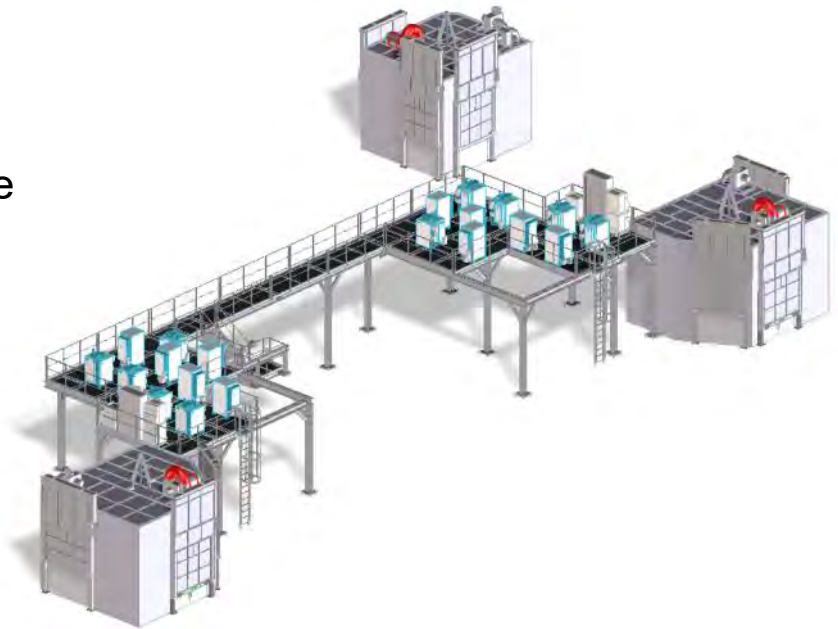
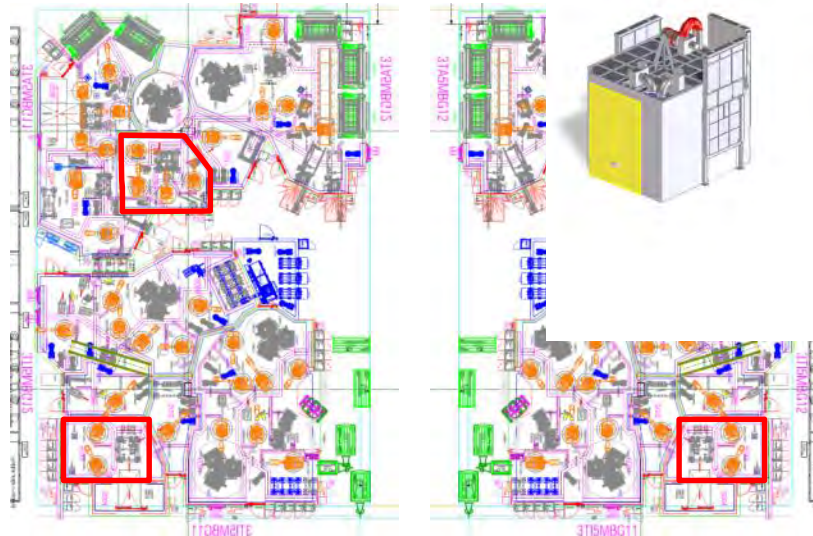
# BMW F55 / Swindon

- BMW F55 – mini 5dr – rear doors
- Realization phase 5/2013 – 07/2013
- 4 laser welding cells – 111 m<sup>2</sup>
- 6 x tactile laser welding Scansonic ALO3
- 2 x remote laser welding with seam tracking Scanlab 30 FC-V + Lessmüller Weldeye remote
- 8 x Trumpf disc laser 4 kW



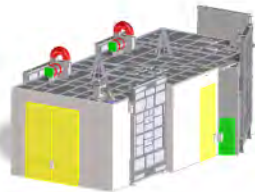
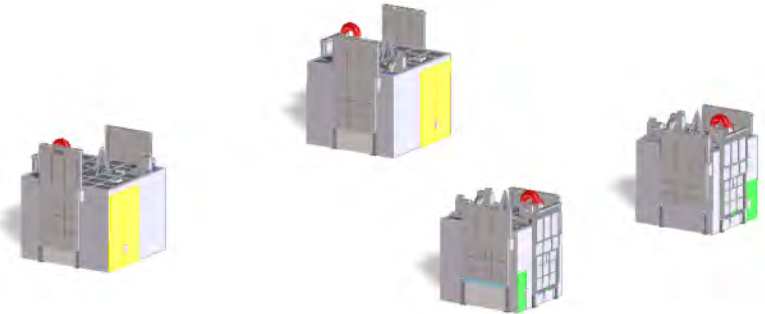
# BMW F45 / Leipzig

- BMW F45 – BMW 2er Active Tourer – front and rear doors
- Realization phase 6/2013 – 08/2013
- 4 laser welding cells – 114 m<sup>2</sup>
- 6 x tactile laser welding Scansonic ALO3
- 2 x remote laser welding with seam tracking Scanlab 30 FC-V + Lessmüller Weldeye remote
- 8 x IPG fiber laser 4 kW



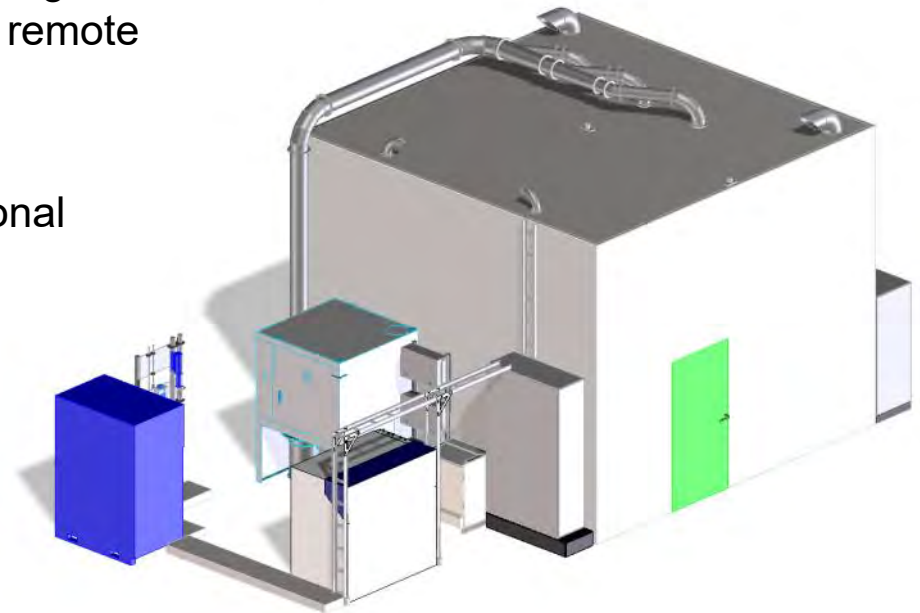
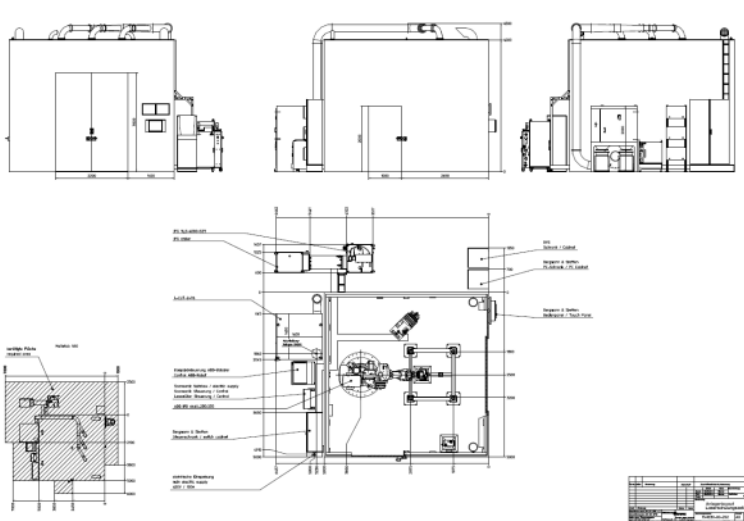
## Nedcar F56 / Born

- BMW F56 – mini 3dr – hood and front doors
- Realisation phase 8/2013 – 11/2013
- 5 laser welding cells – 206 m<sup>2</sup>
- 11 x tactile laser welding Scansonic ALO3
- 2 x remote laser welding with seam tracking Scanlab 30 FC-V + Lessmüller Weldeye remote
- 13 x Trumpf disc laser 4 kW



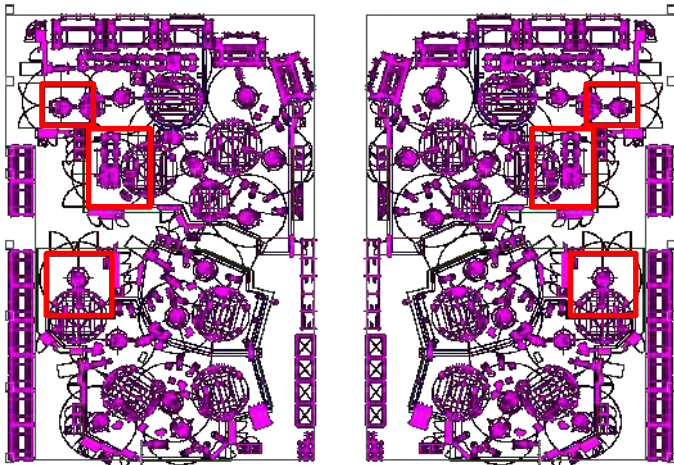
# Nedcar F56 / Born

- Laser Test Cell – 25 m<sup>2</sup>
- Realization phase 9/2013 – 10/2013
- 1 x tactile laser welding Scansonic ALO3
- 1 x remote laser welding with seam tracking Scanlab 30 FC-V + Lessmüller Weldeye remote
- 1 x Trumpf disc laser 4 kW
- 1 x Siemens BVS cabinet – fully operational



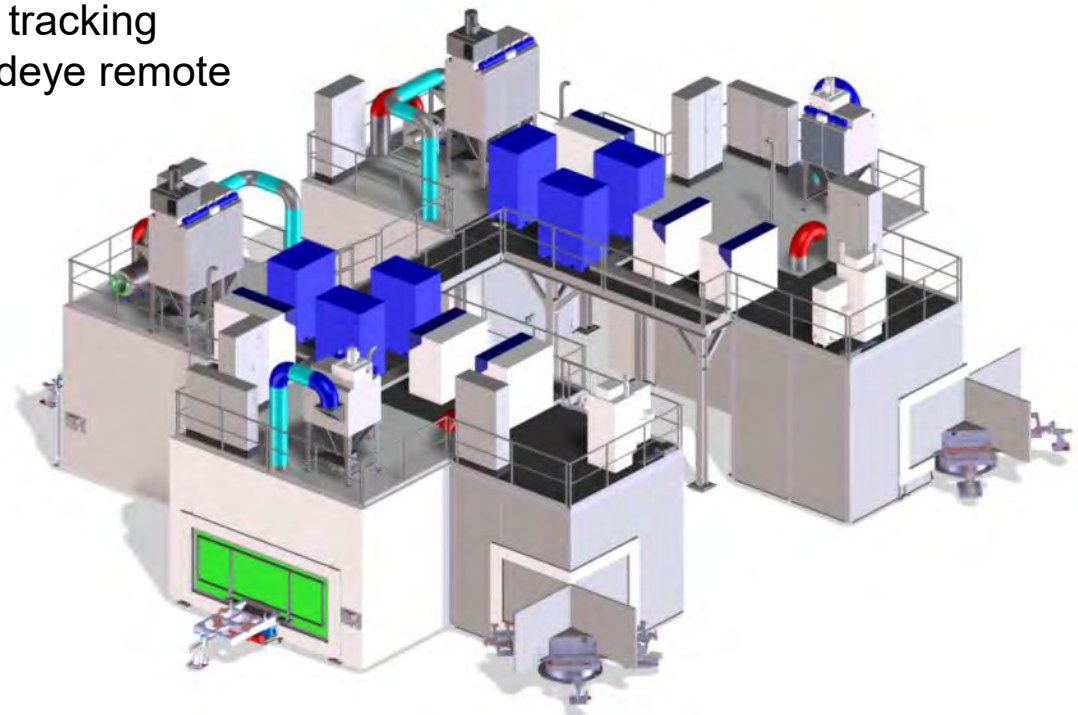
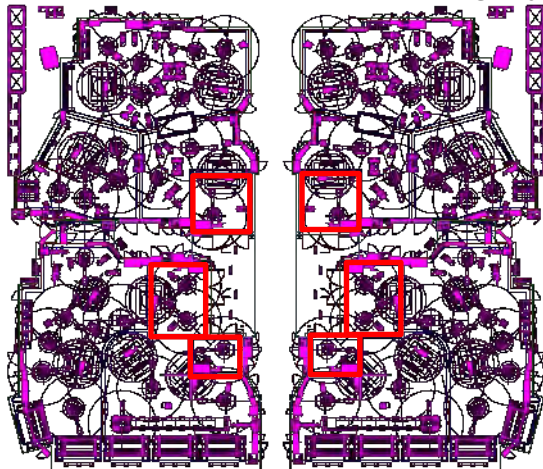
## Magna F46 / Elsendorf

- BMW F46 – BMW 2er Grand Tourer – front and rear doors
- Realization phase 11/2013 – 06/2014
- 6 laser welding cells – 115 m<sup>2</sup>
- 2 x tactile laser welding Scansonic ALO3
- 2 x remote laser welding with seam tracking Scanlab 30 FC-V + Lessmüller Weldeye remote
- 4 x Trumpf disc laser 4 kW
- 2 x Cleanlaser cleaning system



## Magna F48 / Elsendorf

- BMW F48 – BMW X1 – front and rear doors
- Realization phase 10/2013 – 02/2014
- 6 laser welding cells – 117 m<sup>2</sup>
- 2 x tactile laser welding Scansonic ALO3
- 2 x remote laser welding with seam tracking Scanlab 30 FC-V + Lessmüller Weldeye remote
- 4 x Trumpf disc laser 4 kW
- 2 x Cleanlaser cleaning system





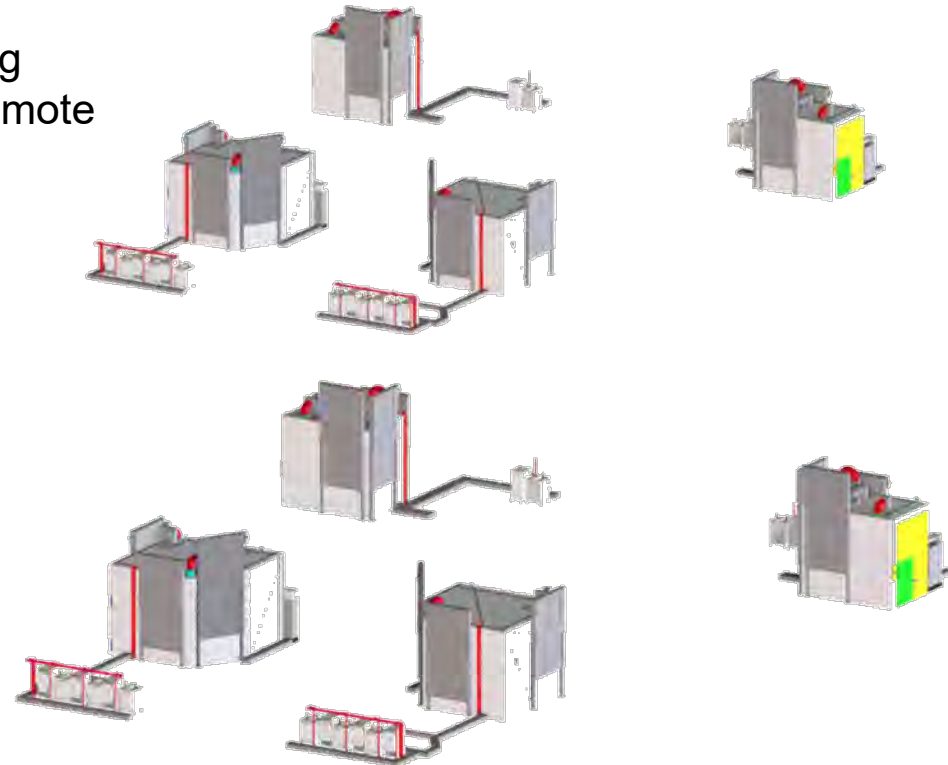
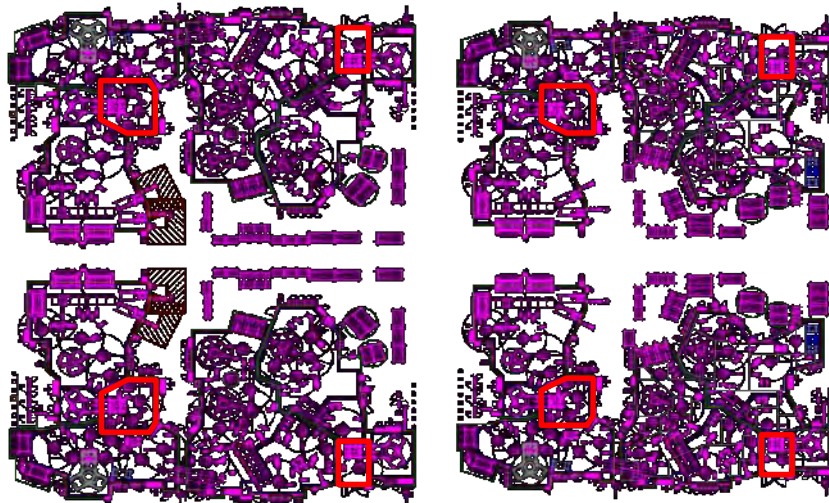
## Läpple F48 / Teublitz

- BMW F48 – BMW X1 – tailgate brazing
- Realization phase 05/2014 – 07/2014
- 1 laser welding/brazing cell – 25 m<sup>2</sup>
- 1 x tactile laser welding/brazing Scansonic ALO3
- 4 x IPG fiber laser 4 kW



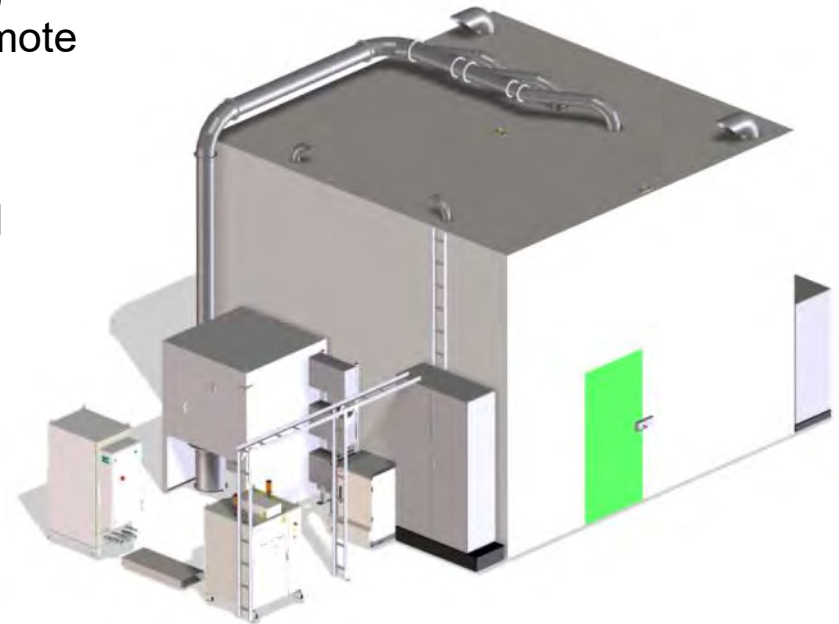
# BMW F45, F49, F52 / Shenyang (CN)

- BMW F45, F49, F52 – front and rear doors
- Realization phase 10/2014 – 06/2015
- 8 laser welding cells – 212 m<sup>2</sup>
- 12 x tactile laser welding Scansonic ALO3
- 4 x remote laser welding with seam tracking Scanlab 30 FC-V + Lessmüller Weldeye remote
- 16 x IPG fiber laser 4 kW



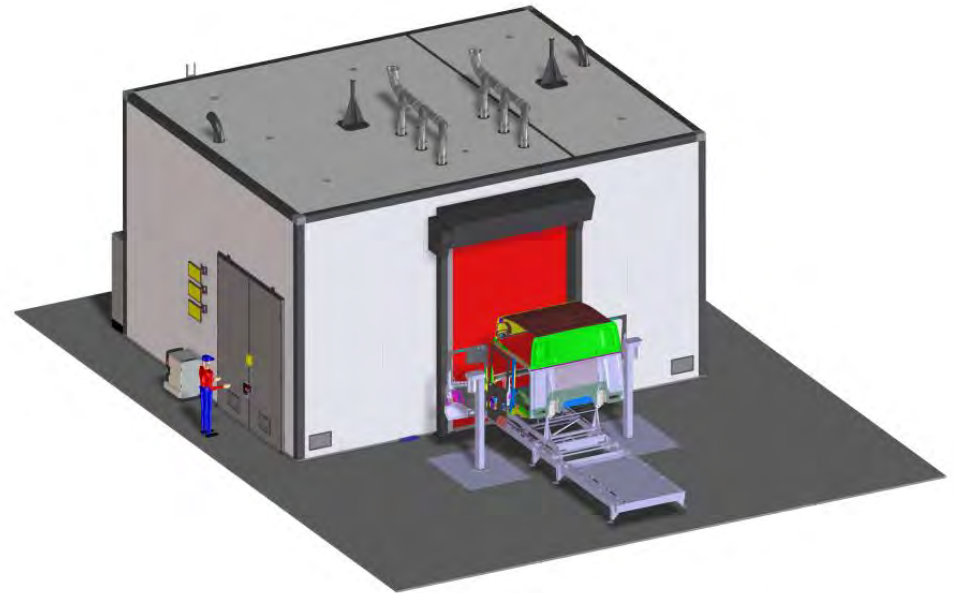
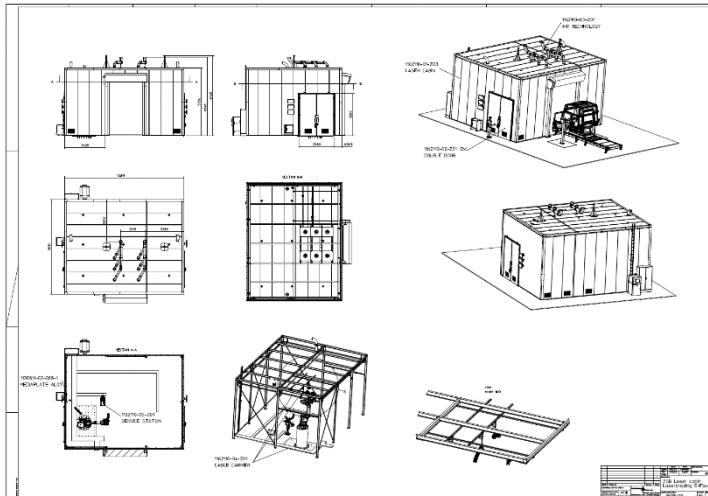
## BMW / Shenyang (CN)

- Laser Test Cell – 25 m<sup>2</sup>
- Realization phase 12/2014 – 02/2015
- 1 x tactile laser welding Scansonic ALO3
- 1 x remote laser welding with seam tracking Scanlab 30 FC-V + Lessmüller Weldeye remote
- 1 x Trumpf disc laser 4 kW
- 1 x Siemens BVS cabinet – fully operational



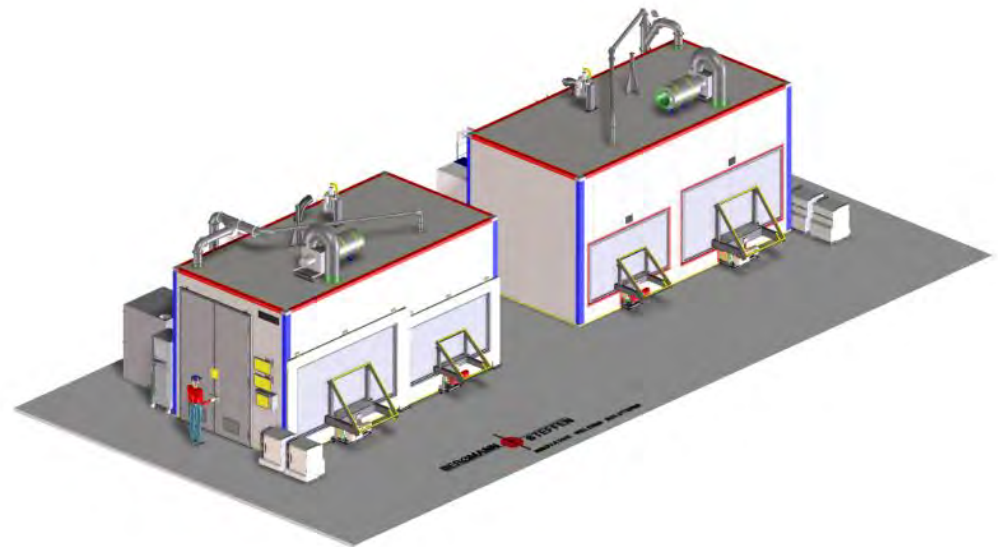
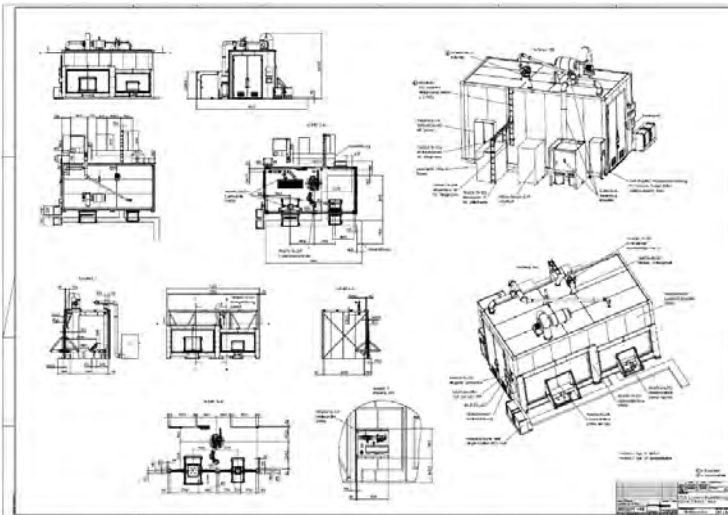
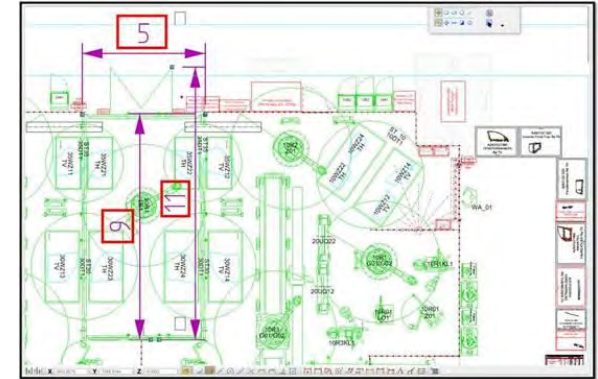
# Scania / Oskarsham Ice / Prague

- ICE / Scania - Truckcabin
- Realization phase 01/2018 – 07/2018
- 1 x laser brazing cell – 80 m<sup>2</sup>
- 1 x tactile laser welding Scansonic ALO3
- 1 x laser brazing with Engrotec scanner
- 1 x Laserline LDF 4000-100 4 kW



# ABB Magnetto / Bremen

- Daimler N293 – front and rear doors
- Realization phase 01/2018 – 06/2018
- 2 x laser welding cells – 90 m<sup>2</sup>
- 2 x 3D-Laser-Remote Trumpf IPFO with Tornadoblade®
- 2 x Trumpf TruDisk 4 kW



## BMW / South Creer; S.C. USA

- BMW LK G05 – Sideframe
- Realization phase 03/2018 – 04/2018
- 1 x lasercabin brazing cell – approx. 60 m<sup>2</sup>

